

COPYRIGHT © Hangzhou EZVIZ Software Co., Ltd. ALL RIGHTS RESERVED.

Any and all information, including, among others, wordings, pictures, graphs are the properties of Hangzhou EZVIZ Software Co., Ltd. (hereinafter referred to as "EZVIZ"). This user manual (hereinafter referred to as "the Manual") cannot be reproduced, changed, translated, or distributed, partially or wholly, by any means, without the prior written permission of EZVIZ. Unless otherwise stipulated, EZVIZ does not make any warranties, guarantees or representations, express or implied, regarding to the Manual.


About this Manual

The Manual includes instructions for using and managing the product. Pictures, charts, images and all other information hereinafter are for description and explanation only. The information contained in the Manual is subject to change, without notice, due to firmware updates or other reasons. Please find the latest version in the EZVIZ™ website (<http://www.ezvizlife.com>).

Revision Record

New release – January, 2021

Trademarks Acknowledgement

EZVIZ™, ™, and other EZVIZ's trademarks and logos are the properties of EZVIZ in various jurisdictions. Other trademarks and logos mentioned below are the properties of their respective owners.

Legal Disclaimer

TO THE MAXIMUM EXTENT PERMITTED BY APPLICABLE LAW, THE PRODUCT DESCRIBED, WITH ITS HARDWARE, SOFTWARE AND FIRMWARE, IS PROVIDED "AS IS", WITH ALL FAULTS AND ERRORS, AND EZVIZ MAKES NO WARRANTIES, EXPRESS OR IMPLIED, INCLUDING WITHOUT LIMITATION, MERCHANTABILITY, SATISFACTORY QUALITY, FITNESS FOR A PARTICULAR PURPOSE, AND NON-INFRINGEMENT OF THIRD PARTY. IN NO EVENT WILL EZVIZ, ITS DIRECTORS, OFFICERS, EMPLOYEES, OR AGENTS BE LIABLE TO YOU FOR ANY SPECIAL, CONSEQUENTIAL, INCIDENTAL, OR INDIRECT DAMAGES, INCLUDING, AMONG OTHERS, DAMAGES FOR LOSS OF BUSINESS PROFITS, BUSINESS INTERRUPTION, OR LOSS OF DATA OR DOCUMENTATION, IN CONNECTION WITH THE USE OF THIS PRODUCT, EVEN IF EZVIZ HAS BEEN ADVISED OF THE POSSIBILITY OF SUCH DAMAGES.

TO THE MAXIMUM EXTENT PERMITTED BY APPLICABLE LAW, IN NO EVENT SHALL EZVIZ'S TOTAL LIABILITY FOR ALL DAMAGES EXCEED THE ORIGINAL PURCHASE PRICE OF THE PRODUCT.

EZVIZ DOES NOT UNDERTAKE ANY LIABILITY FOR PERSONAL INJURY OR PROPERTY DAMAGE AS THE RESULT OF PRODUCT INTERRUPTION OR SERVICE TERMINATION CAUSED BY: A) IMPROPER INSTALLATION OR USAGE OTHER THAN AS REQUESTED; B) THE PROTECTION OF NATIONAL OR PUBLIC INTERESTS; C) FORCE MAJEURE; D) YOURSELF OR THE THIRD PARTY, INCLUDING WITHOUT LIMITATION, USING ANY THIRD PARTY'S PRODUCTS, SOFTWARE, APPLICATIONS, AND AMONG OTHERS.

REGARDING TO THE PRODUCT WITH INTERNET ACCESS, THE USE OF PRODUCT SHALL BE WHOLLY AT YOUR OWN RISKS. EZVIZ SHALL NOT TAKE ANY RESPONSIBILITIES FOR ABNORMAL OPERATION, PRIVACY LEAKAGE OR OTHER DAMAGES RESULTING FROM CYBER ATTACK, HACKER ATTACK, VIRUS INSPECTION, OR OTHER INTERNET SECURITY RISKS; HOWEVER, EZVIZ WILL PROVIDE TIMELY TECHNICAL SUPPORT IF REQUIRED. SURVEILLANCE LAWS AND DATA PROTECTION LAWS VARY BY JURISDICTION. PLEASE CHECK ALL RELEVANT LAWS IN YOUR JURISDICTION BEFORE USING THIS PRODUCT IN ORDER TO ENSURE THAT YOUR USE CONFORMS TO THE APPLICABLE LAW. EZVIZ SHALL NOT BE LIABLE IN THE EVENT THAT THIS PRODUCT IS USED WITH ILLEGITIMATE PURPOSES.

IN THE EVENT OF ANY CONFLICTS BETWEEN THE ABOVE AND THE APPLICABLE LAW, THE LATTER PREVAILS.

Table of Contents

Overview	1
1. Package Contents	1
2. Basics	1
Get the EZVIZ App	2
Preparations	2
1. Remove Cover	2
2. Remove Insulation Strip	2
Add Device	3
1. Method One: Add by Scanning QR Code	3
2. Method Two: Add by the Gateway	3
Installation	4
1. Put on the table	4
2. Stick at Where You Want	4
Operations on the EZVIZ App	5
1. Homepage	5
2. Settings	5

Overview

1. Package Contents



Smart Button



Double-sided Tape

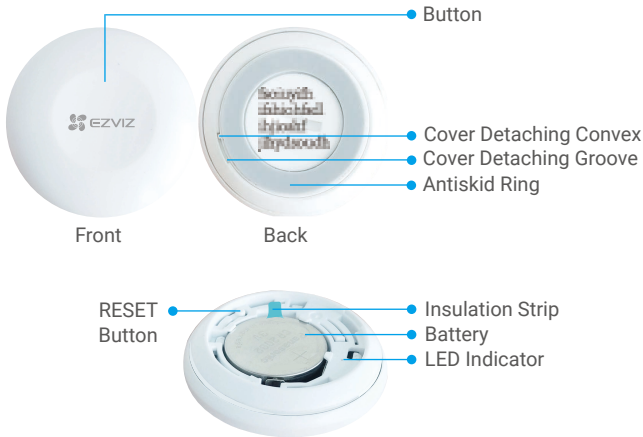


Regulatory Information



Quick Start Guide

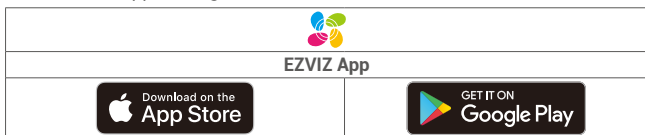
2. Basics



Name	Description
Button	Press the button once, twice or press and hold the button, the custom operations or scenes on the app can be performed.
RESET Button	Press and hold the RESET button for over 5s, the smart button will restart and then enter device adding mode.
LED Indicator	<ul style="list-style-type: none">• Fast-flashing Blue: Enters device adding mode.• Fast-flashing Blue and then off: Added to the Gateway successfully.• Fast-flashing Blue and then off in 180 seconds: Failed to be added to the gateway.

Get the EZVIZ App

1. Connect your mobile phone to Wi-Fi (suggested).
2. Download and install the EZVIZ app by searching for "EZVIZ" in the App Store or Google Play™.
3. Launch the app and register an EZVIZ user account.

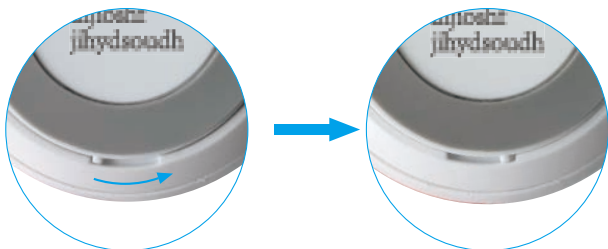


- i** If you have already used the app, please make sure that it is the latest version. To find out if an update is available, go to the app store and search for "EZVIZ".

Preparations

1. Remove Cover

Remove the cover of the smart button by turning the antiskid ring counterclockwise as shown in the figure below.



2. Remove Insulation Strip

Remove the battery insulation strip as shown in the figure below.



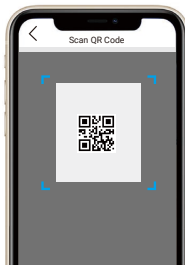
- i**
- If you need to replace the battery, please purchase one CR2032 210mAh.
 - When replacing batteries, please insert with the positive side facing up.
 - Keep your hands dry and clean when touching the circuit board.

Add Device

- i** The smart button should be used along with EZVIZ Zigbee Smart Gateway (afterinafter referred to as "gateway"). Please add gateway to the EZVIZ Cloud by referring to the gateway user manual, and then add the smart button to the gateway.

1. Method One: Add by Scanning QR Code

1. Log in to your account through EZVIZ app, tap the device adding icon and then the QR code scanning interface will be displayed.
2. Scan the QR code on the user manual, and then add the sensor to the gateway.



3. Add the smart button to the gateway by following the wizard on the app.
4. Align the cover detaching convex with the cover detaching groove as shown in the figure below. Rotate the cover clockwise to tighten cover.



2. Method Two: Add by the Gateway

- i** When adding device by the gateway, place the device as close to the gateway as possible.

1. Make the gateway enter device adding mode as instructed by the user manual of the gateway
2. Press and hold the RESET button for over 5 seconds until the indicator on the smart button turns fast-flashing blue, and the smart button enters adding mode.
3. The smart button will be added to the gateway automatically.
4. Align the cover detaching convex with the cover detaching groove as shown in the figure below. Rotate the cover clockwise to tighten the cover.

Installation

i The smart button can be put on the table, or be sticked on where you want through the double-sided tape on the cover of the smart button.

1. Put on the table



Fig. 1 Put on the table

2. Stick at Where You Want



Fig. 2 Stick at where you want

